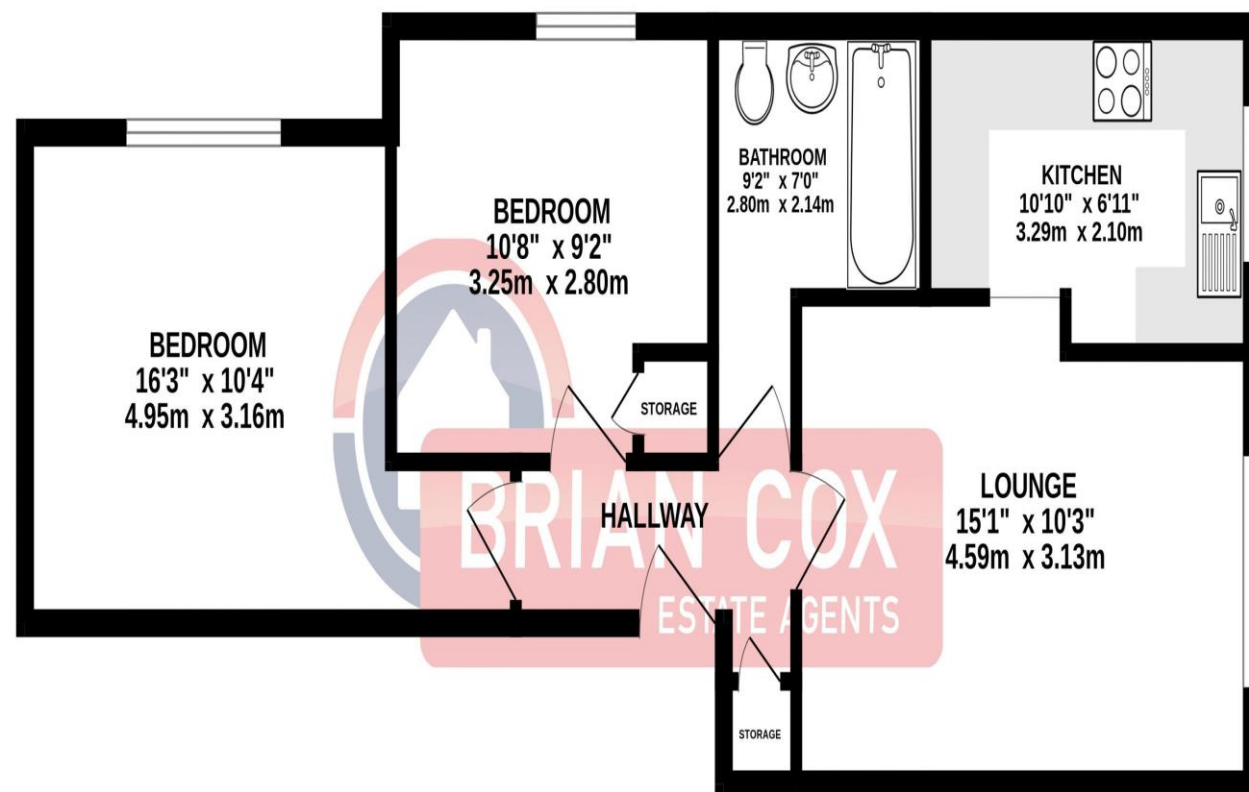


the floorplan...

FIRST FLOOR
544 sq.ft. (50.5 sq.m.) approx.



TOTAL FLOOR AREA : 544 sq.ft. (50.5 sq.m.) approx.

Whilst every attempt has been made to ensure the accuracy of the floorplan contained here, measurements of doors, windows, rooms and any other items are approximate and no responsibility is taken for any error, omission or mis-statement. This plan is for illustrative purposes only and should be used as such by any prospective purchaser. The services, systems and appliances shown have not been tested and no guarantee as to their operability or efficiency can be given.
Made with Metropix ©2023

more details from...

call: Brian Cox North Greenford: 0208 578 1004

email: daniel.jed@brian-cox.co.uk

web: www.brian-cox.co.uk



0208 578 1004
brian-cox.co.uk



TWO BEDROOM - FIRST FLOOR APARTMENT - PARKING - NO CHAIN. Brian Cox and Company are delighted to bring to the market this two bedroom first floor flat within easy reach of Greenford Station and the A40. The property has been well maintained and would suit buy to let investors as well as first time buyers. The property briefly consists of a entrance hallway, bright lounge, fitted kitchen, bathroom and two bedrooms. Viewings are highly recommended, so call now to arrange yours!!



£275,000
Leasehold

Chartwell Close, Greenford UB6 8LP

Consumer Protection from Unfair Trading Regulations 2008 We have not tested any apparatus, equipment, fixtures, fittings or services and so cannot verify that they are in working order or fit for purpose. You are advised to obtain verification from your solicitor or surveyor. References to the tenure of a property are based on information supplied by the seller. We have not had sight of the title documents and a buyer is advised to obtain verification from their solicitor. Items shown in photographs are not included unless specifically mentioned within the sales particulars, but may be available by separate negotiation. We advise you to book an appointment to view before embarking on any journey to see a property, and check its availability.



in brief...

- Two Bedroom
- First Floor Apartment
- Parking
- No Chain
- Double Glazed / Electric Heating
- Convenient Location



the location...

nearest stations ...

Greenford (0.5 miles)
Northolt (0.7 miles)
South Greenford (1.0 miles)

Greenford is a large suburb in the London Borough of Ealing in West London, UK. It was an ancient parish in the historic county of Middlesex. It is 11 miles (18 km) from Charing Cross in Central London.

There are several local primary schools in the area which include Oldfield Primary School, Coston Primary School, Edward Betham Church of England Primary School, Ravenor Primary School.

If you have older children there are also local secondary schools nearby some of these include William Perkin Church of England High School, Belvue School and Greenford High School.

0208 578 1004

brian-cox.co.uk